



---

# BUDGET NOTE REPORT OVERVIEW:

## Regional Early Learning Entities

### Wednesday, March 10, 2021



# BUDGET NOTE: 2019 – 2021

“... study the feasibility of consolidating Early Learning Hubs and Child Care Resources and Referral (CCR&R) entities to better align [these] regional entities into one regional body while maintaining the scope, purpose, and legislatively intended function of both”



# FOCUSING REPORT TO ADVANCE AN EQUITABLE EL SYSTEM

## Focus of Report

- Better defining the roles of each entity, the shared body of work between the entities, and how each entity can individually be improved

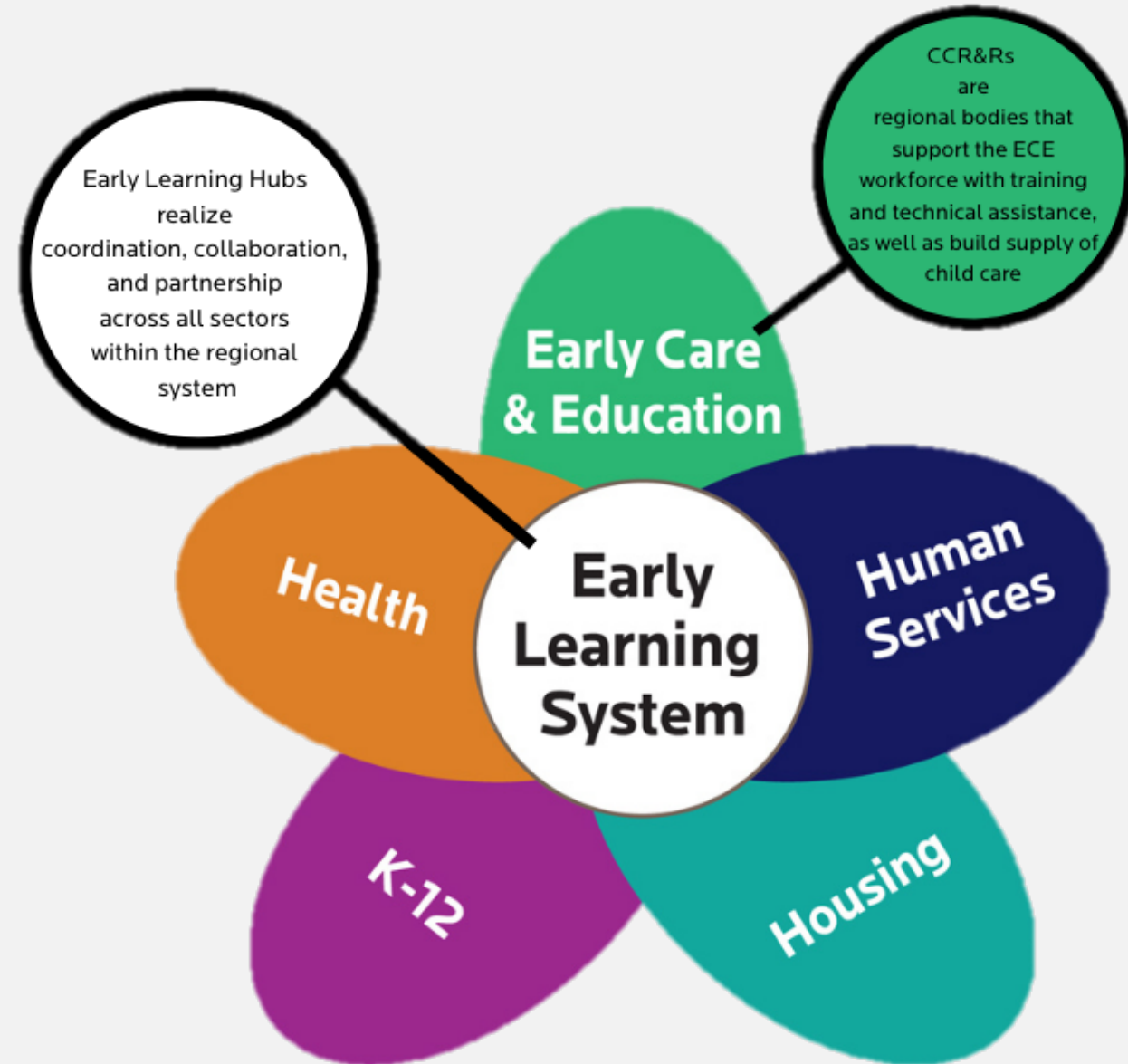
## Emphasis on Methodology

- Worked to emphasize human-centered design to further equity – talking with CCR&R and Hub Directors, Hub Governance Members, Families, Providers, and other stakeholders who depend on these entities
- Overall, report based on the input of 300+ Oregonians who care about young children and engage with regional systems



# DISTINCT & RELATED ROLES IN THE EL SYSTEM

- Hubs serve to connect and cross various sectors
- CCR&Rs are about workforce and supply development in the early care and education sector
- Both are critical to strong early learning across Oregon, but each has a unique role



# BUDGETS FOR EACH ENTITY

---

Early Learning Hubs	Child Care Resource & Referral
\$30 million for 2019 - 2021	\$23 million for 2019 – 2021
Primarily General Fund and SSA	Primarily Federal Funding
Less than 10% Federal Funds	Less than 20% SSA



# RECOMMENDATIONS: HUBS

- Adopt Theory of Change for the Hubs
- Refine Hub scope of work
- Refine Hub funding approach to assure sufficient internal capacity



# RECOMMENDATIONS: CCR&Rs

- Refine CCR&R scope of work
- Focus on ensuring resources from the Student Success Act Professional Learning Plan effectively increase CCR&R capacity
- Increase the visibility of CCR&Rs within communities
- Continue to examine the need for additional funding for CCR&Rs



# RECOMMENDATIONS: HUBS & CCR&Rs

- Improve state and regional knowledge and understanding of the Hubs and CCR&Rs
- Engage the Hubs and CCR&Rs in defining a shared scope of work to build regional child care supply
- Engage the cohort of Hubs and CCR&Rs with a shared backbone organization to increase integration and alignment.





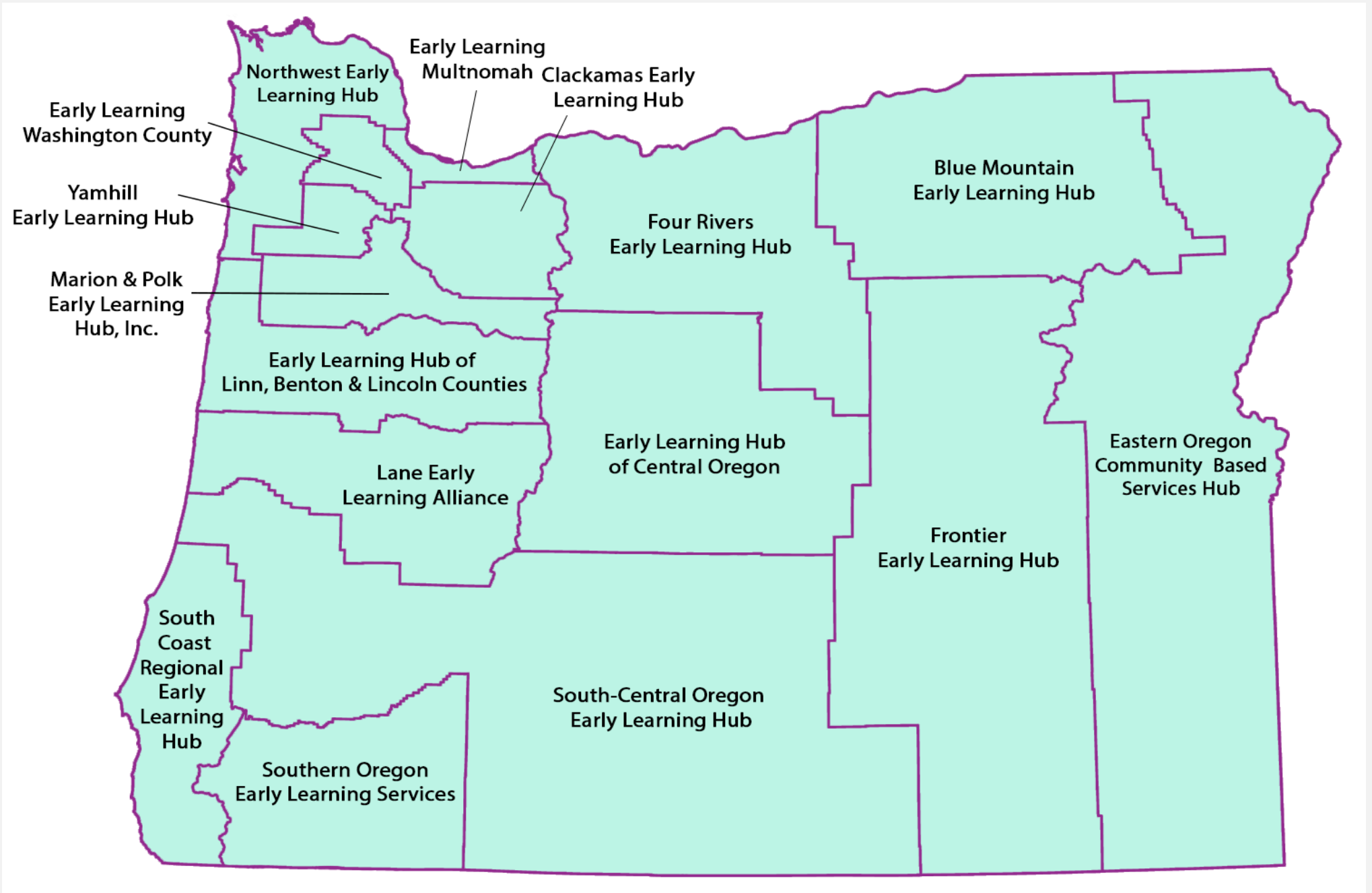
# HISTORY OF EARLY LEARNING HUBS

HB 2013 (2013) authorizing legislation for Early Learning Hubs

**ORS 417.827**

Coordinate early learning services

- [Align] with the services provided by the public schools of the community...
  - [Align] with...the system of public health care and services available through local health departments and other publicly supported programs delivered through, or in partnership with, counties and coordinated care organizations.
  - ...Integrate efforts among education providers, providers of health care, providers of human services and providers of other programs and services in the community.
- Maximum of Sixteen Hubs
  - Cover the entire geography of the state



Northwest Early Learning Hub

Early Learning Multnomah Clackamas Early Learning Hub

Early Learning Washington County

Yamhill Early Learning Hub

Marion & Polk Early Learning Hub, Inc.

Early Learning Hub of Linn, Benton & Lincoln Counties

Lane Early Learning Alliance

South Coast Regional Early Learning Hub

Southern Oregon Early Learning Services

Four Rivers Early Learning Hub

Early Learning Hub of Central Oregon

South-Central Oregon Early Learning Hub

Frontier Early Learning Hub

Blue Mountain Early Learning Hub

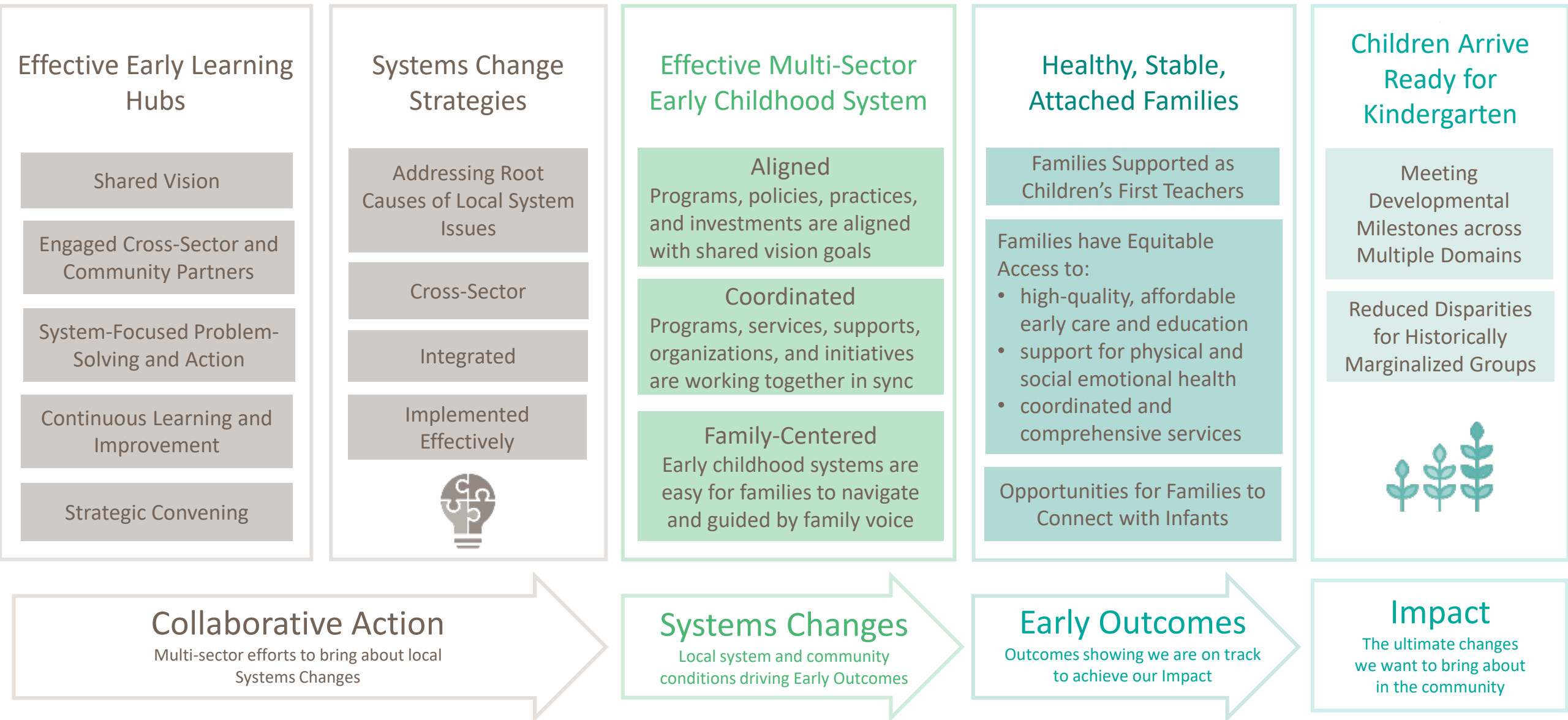
Eastern Oregon Community Based Services Hub

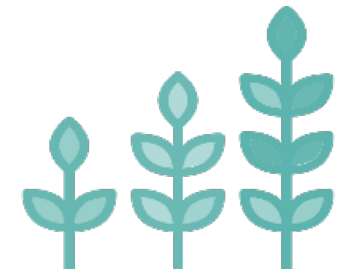


# HUB BACKBONE ORGANIZATIONS

Hub Backbone Organization	Hub County Coverage	Hub Backbone Organization	Hub County Coverage
Early Learning Hub, Inc.	Marion, Polk	High Desert ESD	Crook, Deschutes, Jefferson
United Way of Columbia-Willamette	Multnomah	Washington County Health & Human Services	Washington
United Way of Lane County	Lane	Malheur ESD	Baker, Malheur, Wallowa
Douglas ESD	Douglas, Lake, Klamath	Linn-Benton Community College	Linn, Benton, Lincoln
Yamhill Community Care Organization	Yamhill	Northwest Regional ESD	Clatsop, Columbia, Tillamook
Harney ESD	Grant, Harney	Clackamas County	Clackamas
InterMountain ESD	Umatilla, Morrow, Union	Oregon Coast Community Action	Coos, Curry and Coastal Douglas County
Southern Oregon ESD	Jackson, Josephine	Columbia Gorge ESD	Hood River, Wasco, Sherman, Gilliam, Wheeler

# EARLY LEARNING HUB THEORY OF CHANGE





## Children Arrive Ready for Kindergarten

Meeting Developmental  
Milestones across Multiple  
Domains

Reduced Disparities for  
Historically Marginalized  
Groups



## Healthy, Stable, Attached Families Supporting Children's Development

Children's first teachers

Equitable access to supports,  
services, opportunities

Opportunities for  
Connection



## Effective Cross-Sector Early Childhood System

Aligned

Coordinated

Family-Centered



## Systems Change Strategies

Addressing Root Causes of Local System Issues

Cross-Sector

Integrated

Implemented Effectively

## Examples of Current Systems Change Strategies:

- Coordinating Enrollment Across Programs
  - Recruiting families in their region for a “no wrong door” approach to eligibility for services across ECE sector
- Connecting families to cross-sector partnerships
- Creating local priorities for populations needing services
- Must work together with programs across sectors





## Effective Early Learning Hubs

Shared Vision

Engaged Cross-Sector and Community Partners

System-Focused Problem-Solving and Action

Continuous Learning and Improvement

Strategic Convening

## What does this look in daily action?

- **Early Care and Education Sector Plans:** Convening families, mixed-delivery providers, business partners, and others to identify priority populations of children for services, types of services needed
- **Governance Councils:** Bringing key partners across different sectors strategic plan and bring together activity across sectors for working together
- **Kindergarten Partnership Innovation Grants:** Using data to decide on strategies to align ECE providers and K-3 partners in shared learning or transition activities

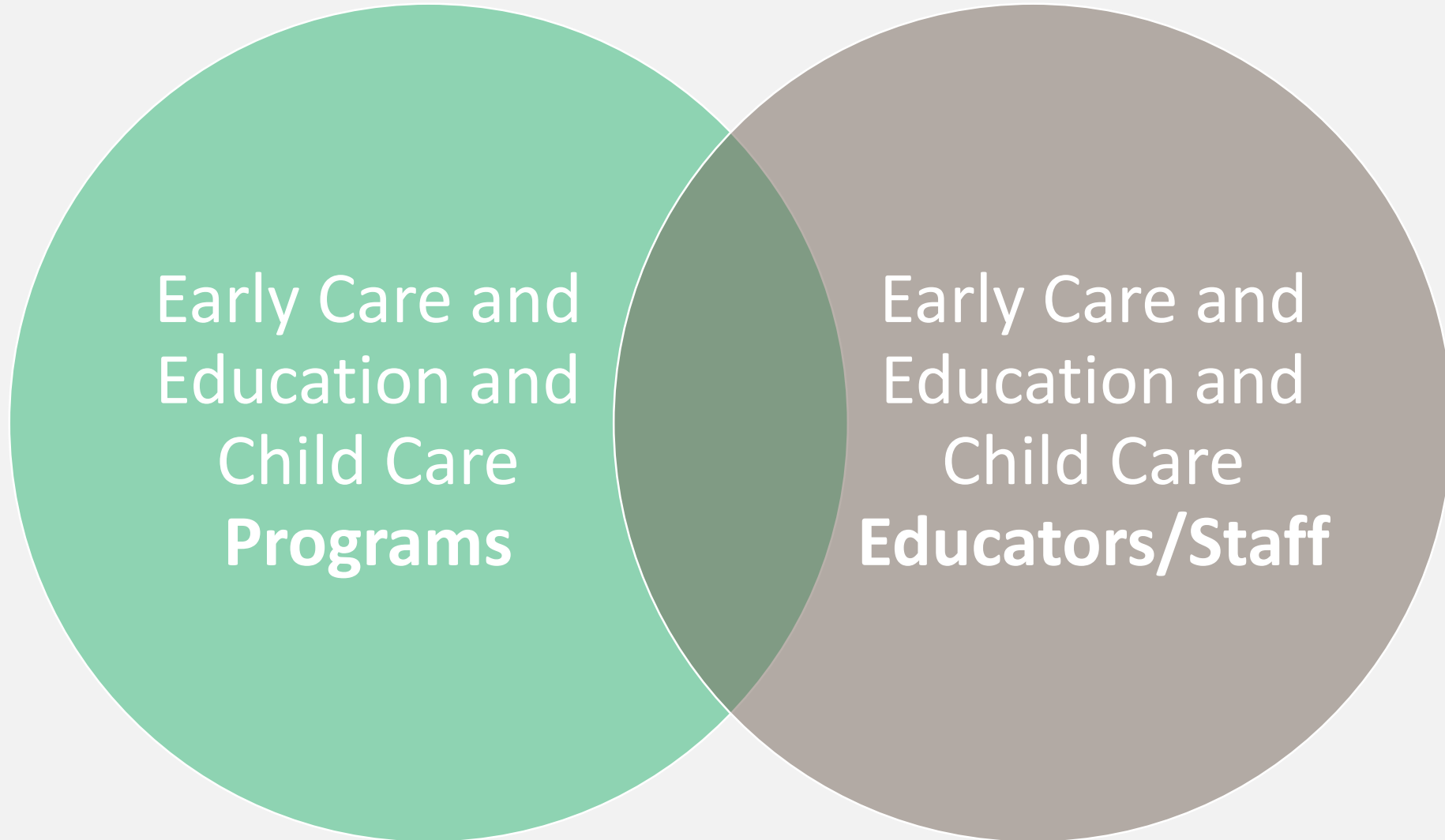


# HISTORY OF CCR&Rs

- Began through Federal Child Care Development Fund (CCDF) nationally
- Oregon established CCR&Rs in 1989 and re-competed in 2014
- Aligned to Hub Regions in 2019/2020 – Now 15 CCR&Rs, 2 new CCR&Rs in Eastern Oregon



# PURPOSE OF CCR&Rs





# CCR&Rs SUPPORT A DIVERSE ECE WORKFORCE

PROGRAM TYPE	SETTINGS & AGE GROUPS	EDUCATION & TRAINING REQUIREMENTS	COMPENSATION
Child Care	Child Care Centers and Homes / Birth to 12-year-olds	Training hours	\$25,000
Preschool Promise	Mixed-delivery / Preschool Age	Bachelor's + specialized training or equivalent	\$35 – \$65K
Head Start	Head Start Centers or FCC Homes / Birth to 5	Bachelor's degree	\$35 - \$65K
Family, Friend & Neighbor Programs		Training hours	



# CCR&R FUNCTIONS



Increasing Overall Program Quality

Employing and deploying Quality Improvement Specialists

QIS Support participation in Spark

Job-embedded professional learning for publicly-funded programs

Coaching by an expert

Specific QIS for Baby Promise Providers

Building and Stabilizing Child Care Supply

Ad hoc support

Support to navigate licensing and establishing child care business

Support to enroll children and families for licensed/FFN

Ongoing Skill and Knowledge Building to Improve Quality of individual Early Childhood Educators

Required trainings on health & safety

Focused Child Care Networks with other professionals

Training on competencies

Connection to degrees



# RECOMMENDATIONS: ELD

- Improve inclusion of regional early learning system stakeholder voices
- Identify opportunities for improvement in the Hub and CCR&R administration, management, and technical assistance
- Develop a more in-depth understanding of the optimal backbone organization(s) for effective Hubs and CCR&Rs



# RECOMMENDATIONS: LEGISLATURE AND ELC

- Improve Hub access to connected, timely, and accurate data to help make informed decisions and to evaluate their impact.
  - ELD and the cross-agency partners of the Early Learning Council— the Oregon Department of Human Services, the Oregon Department of Education, the Oregon Health Authority, and the Oregon Housing and Community Services—must have the resources necessary to address the challenges the Hubs encounter with reliable and accessible data, and a comprehensive and connected early learning data system.



## OTHER NEXT STEPS

- Continue to look at role of backbone
- Working with CCR&Rs and Hubs that share a backbone to understand more about whether fiscal efficiencies are realized