

EARLY LEARNING HUBS

a community-based solution to ensure young children are thriving and ready to enter kindergarten

Dorothy Spence | she/her
Northwest Early Learning Hub
dspence@nwresd.k12.or.us
503-614-1682

BACKGROUND

Oregon's early learning policy is founded in the overwhelming evidence that children's experiences from 0-5 have lasting impacts on their education, health, and stability. As a result, Oregon has pushed to drive investment and attention "upstream" focusing on preventative supports for families raising children during this critical period. This requires cross-agency collaboration, at the state & local level, of programming overseen by ODHS, OHA, ELD, and ODE in addition to coordination with local business and nonprofits. Hubs were developed in 2014 for the purpose of connecting families with young children to the services necessary to ensure families are healthy, stable, and attached, and children are ready for kindergarten.

LOCAL SOLUTIONS

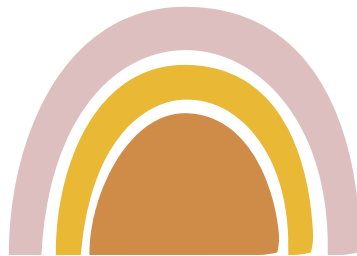
Hubs are designed to focus on children and families furthest from opportunity including those that our system has historically underserved and those who have been under-represented in systemic decision-making. This includes Black, Indigenous, and other People of Color (BIPOC), families navigating poverty, those in rural parts of our state, and individuals with special needs. We center the voices of local parents and caregivers in our work to ensure we strategically address the unique barriers they face, in culturally responsive ways.

HUB ROLE

Like CCOs, Early Learning Hubs are a community-based solution. The Early Learning Division empowers local communities to develop solutions in response to their unique needs. Each of the 16 hubs is comprised of community partners who come together with the sole mission of ensuring young children are thriving and ready to enter kindergarten.



Braid and leverage state, federal, and community funds to invest in the local programs and services most appropriate for the community.



Convene community partners and families to assess and strategize solutions to emerging and persistent issues.



Ensure there is no wrong door, driven by the mission that all children deserve access to high quality early learning opportunities, and culturally specific & community-based family support services.

EARLY LEARNING HUBS

a community-based solution to ensure young children are thriving and ready to enter kindergarten

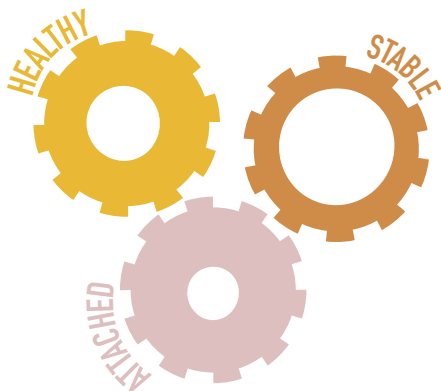
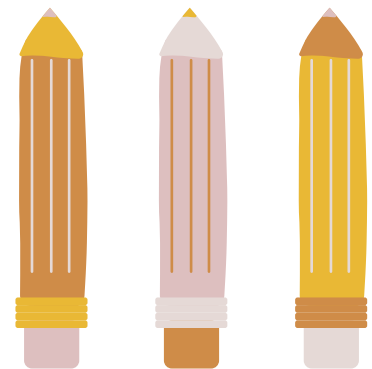
Dorothy Spence | she/her
Northwest Early Learning Hub
dspence@nwresd.k12.or.us
503-614-1682

COVID-19 IMPACT

Research from the National Institute for Children's Health Quality (NICHQ) shows that "vulnerable populations have disproportionately suffered from the lack of coordination across the system: Inequities stemming from poverty, racism, and bias have been intensified by the pandemic, making it even harder for people of color and families with lower income to access existing supports. The connections between the services are what an effective and comprehensive early childhood system is built with."

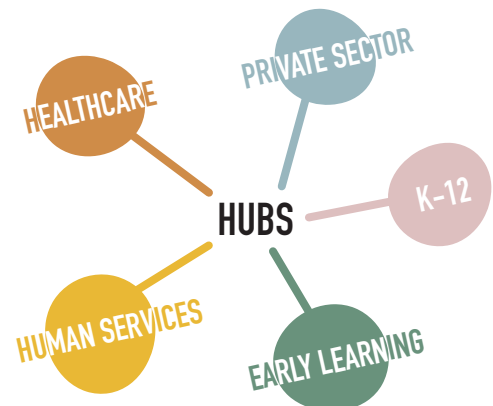
OUR ASKS

We are requesting **current service level funding for Early Learning Hubs**. A reduction in funds, like the \$1.4 million cut proposed in the Governor's budget, would compromise the hubs' ability to connect parents and families to services. This lack of hub coordination leaves families to identify and connect to isolated services independently, rather than accessing a centralized, cohesive, community-based resource.



Maintaining local flexibility and coordination ensures hubs remain responsive to parents and families in their communities. Flexibility of funding allows parent councils and local governing bodies to collectively identify gaps in early childhood services for families and identify solutions that align with the values of the community and the diverse cultures of that community.

Increased investment to strengthen parent councils which empower the local voices at the heart of Oregon's statewide early learning plan, Raise Up Oregon. Resources dedicated to our parent council/parent engagement systems will open access to underserved communities by supporting stipends for parents and staffing to recruit and retain families of color to participate in advisory boards.



EARLY LEARNING HUBS

a community-based solution to ensure young children are thriving and ready to enter kindergarten

Dorothy Spence | she/her
Northwest Early Learning Hub
dspence@nwresd.k12.or.us
503-614-1682

16 REGIONS ACROSS THE STATE

Early Learning Hubs in 16 regions across Oregon are getting cross-sector partners to work together to create local systems that are aligned, coordinated, and family-centered. Families receive the support they need to become healthy, stable and attached and their children receive the early learning experiences they need to thrive.

